

# Zoo Keeper®

## Dialer Maintenance Program Quick Guide 08/98



## Table of Contents

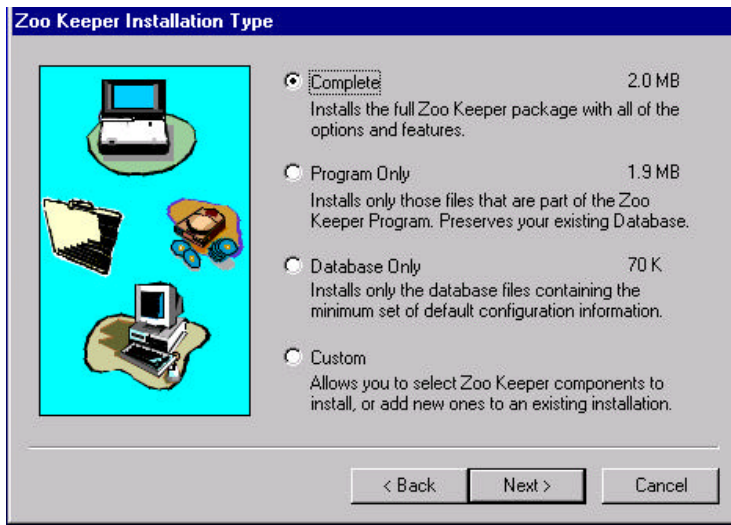
Installing the Zoo Keeper Dialer Maintenance Program	3
Getting Started	3
Installation Type	3
Installation Directory	3
Shortcut Folder	4
Using the Zoo Keeper Dialer Maintenance Program	5
Starting Zoo Keeper	5
Main Window	5
The Zoo Keeper Dialer Maintenance Program Tab Gallery	6
Company Name	6
Site	6
Program Profile	7
Port Profile	7
User/Client Table	7
Password Definition	7
Table Definition	8
Opening the Table Editor	8
Defining a Table	8
Defining a link to a program	8
Creating a Program	9
Opening the Program Editor	9
Defining a program	9
Creating a program	9
Uploading to a dialer	10
Opening the Uploader	10
Configuring the Uploader	10
Uploading	10

**Installing the Zoo Keeper Dialer Maintenance Program**

**Getting Started:**

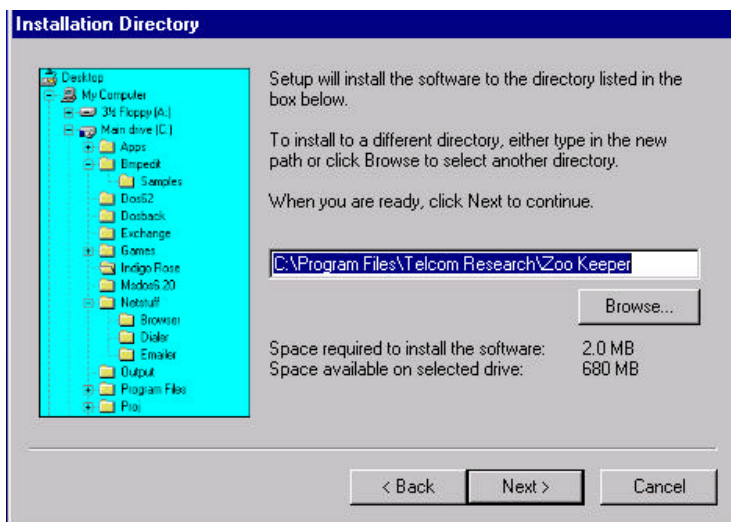
Insert the 3.5" disk into the floppy disk drive  
 Click 'START' and then 'RUN' **Zksetup.exe**  
 You can skip the Welcome message by clicking **NEXT>**  
 Read the license agreement and check the "I agree and accept..." box to continue  
 Click **NEXT>**

**Installation Type:**



If you are installing the program for the first time you should select the Complete installation

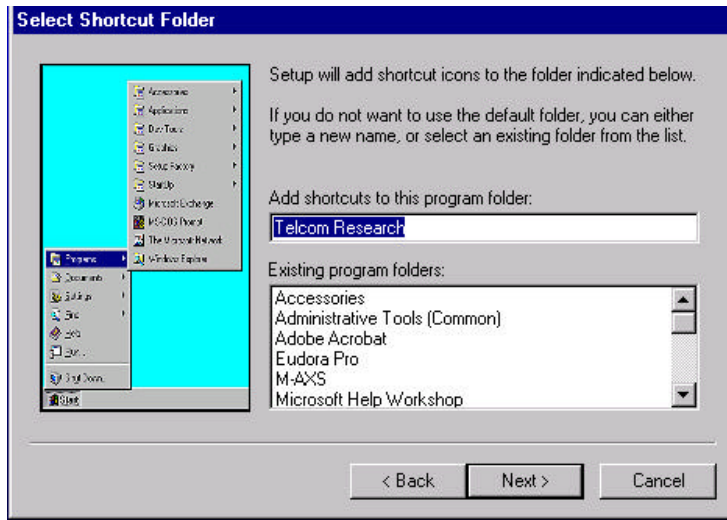
**Installation Directory:**



The default installation directory is:  
**C:\Program Files\Telcom Research\Zoo Keeper**

Click **NEXT>**

**Shortcut Folder:**



Select where the shortcuts are going to be located

Click **NEXT>** and start installing the program

Click the last **NEXT>** when the final setup screen appears and the installation is finished

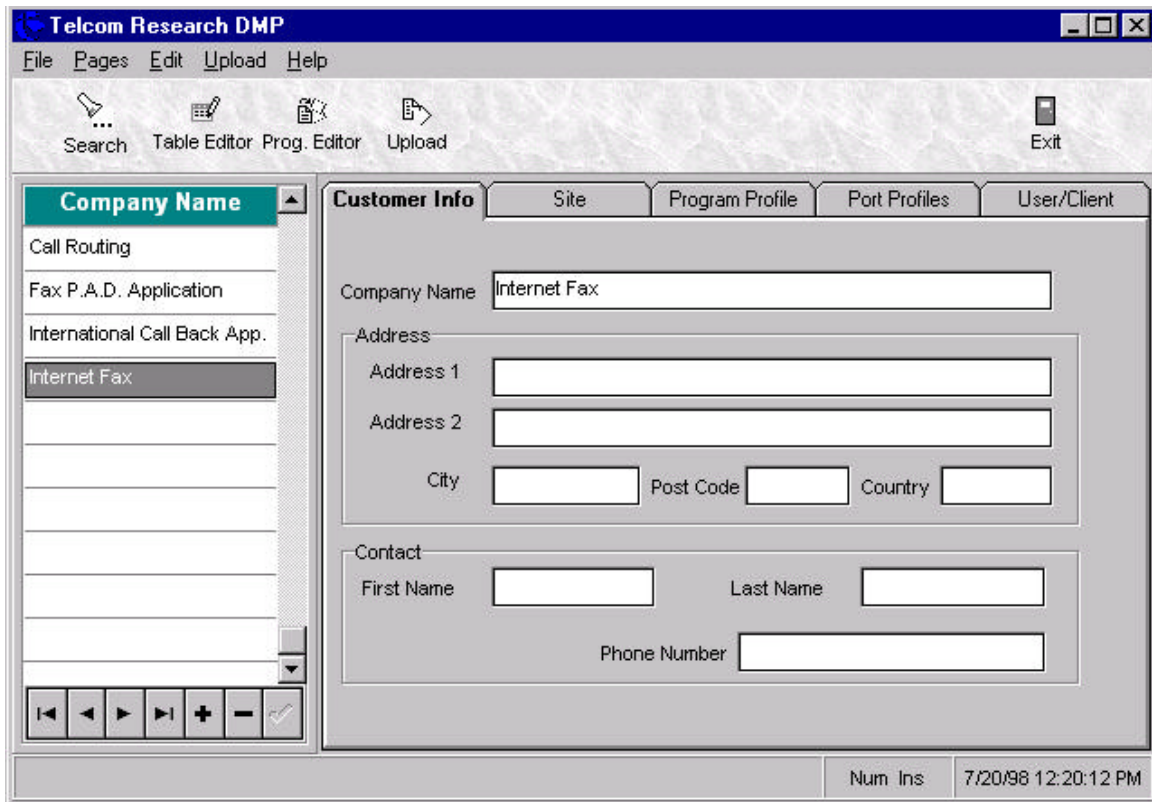
**Using the Zoo Keeper Dialer Maintenance Program:**

**Starting Zoo Keeper:**

Run Zk.exe in the C:\Program Files\Telcom Research\Zoo Keeper directory or use the associated shortcut.

**Main Window:**

The main screen shows you an overview of all the options in the program.



---

**The Zoo Keeper Dialer Maintenance Program Tab Gallery:****Company Name:**

This is a list of Customers within the database. Each name that appears on the list has associated **Customer Info, Site, Program Profiles, Port Profiles** and **User/Clients** index cards. These components contain all the programming information for the dialers installed at the customer site.

**Site:**

**Dialer Type** allows for the selection of the type of dialer that the database record is being created for. **Zoo Keeper<sup>®</sup>** determines which parameters are available for modification in the database according to the type selected. The type selected here is also displayed on the Upload screen and determines the format of the Upload sent to the dialer.

**Connection Type** is used in conjunction with the upload feature.

**Local** - This is selected if the dialer being programmed is in the same location as the PC and a direct connection between the PC and dialer is being used.

**Remote Fax** - This is selected when a remote dialer connected to a fax machine is being accessed for remote programming. When selected, this feature dials the phone number in the Phone Number box that is associated with the Port ID box on the **Port Profiles** card. When the **Connect** icon on the Upload screen is clicked the local AXS dialer is put into Programmer Mode and the remote dialer is called. Once the remote fax has answered **Zoo Keeper<sup>®</sup>** waits for the fax tone to disappear from the line and then sends the Program Mode access code to the remote site automatically.

**Remote Auto-Dial** - This is selected when a remote dialer is to be accessed for remote programming. When selected, this feature dials the phone number in the Phone Number box that is associated with the Port ID box on the **Port Profiles** card. When the **Connect** icon on the Upload screen is clicked the local AXS dialer is put into Programmer Mode, the remote dialer is called and then put into Program Mode automatically.

**Remote Manual Dial** - This is selected when a remote dialer is to be accessed for remote programming. When selected this feature puts the local AXS into Programmer Mode and sends the programming access code to the remote dialer when the '**Connect**' icon is clicked. The person that wishes to do the programming must place the call to the remote site and wait for an answer.

Whichever Connection Type that is selected here appears on the Upload screen. The Connection Type can be temporarily changed using the Drop Down box on the Upload screen.

**Time Offset**

Reserved for Future Use.

**Program Profile:**

This is where a set of Tables, Programs and the System Wide Parameters can be selected and /or modified.

**Table Set**

This allows the selection of a set of tables, which include the Primary Search Table, Secondary Search Table and Pulse Metering Tables. Additions and changes can not be made to the tables. Any changes must be done with the **Table Editor**.

**Program Set**

This allows the selection of a set of programs. Additions and changes can not be made to the programs. Any changes must be done with the **Program Editor**.

**Parameters**

System Wide parameters can be modified within this area.

**Bin Contents**

Common numbers that can be dialed from the program strings. General Purpose Bins 01-10.

**Port Profile:**

This index card is where the remaining parameters (Port Specific) and (Port Specific) General Purpose Bins 11-20 are programmed. The number of ports (dialers), and the phone numbers of the lines the dialers are installed on, associated with the name on the **Company Name** list can be entered here.

**Port ID and Phone Number**

This field allows you to enter the number of ports (dialers) at a site and the associated phone numbers. The phone numbers may be different from the contact number for the customer. The number of ports programmed here is displayed on the **Site** card in the Number of Ports field. The programming of the different ports (dialers) is done through the selection of the port to be programmed via the Drop Down List. The phone number entered here is used by Zoo Keeper when Remote Auto-dial or Remote Fax have been selected as the Connection Type on the Upload screen.

**Port Bins**

General Purpose Bins 11-20

**User/Client Table:**

These two tables are used when verification is required for authorization codes and/or PIN codes.

**Password Definition:**

At installation the default Password for the Table Editor and Program Editor is **zebra**

**Table Definition**

**Opening the Table Editor:**

Select the Table Editor button from the menu.  
 A Password box will pop up in which you must enter the Password

**Defining a Table:**

The tables include the Primary Search Table, Secondary Search Table, Pulse Metering Search Table and Pulse Meter Frequency/Surcharge Table. All the tables are saved in the database under one name and can be viewed and/or modified within the editor.

To add a name in the Table click the + sign and enter a name  
 Click the ✓ sign to save the Table name

**Defining a link to a program:**

When adding an entry to one of the Search Tables you must define the type of entry (Primary Search Table [P], Secondary Search Table [S] or Pulse Metering Search Table [M]). The actual number to be matched is then entered followed by the 2 digit program number to run upon an exact match.

<b>Entry Type</b>	<b>Entry</b>	<b>Action</b>
Specifies if the entry is a Primary, Secondary or Metering Search Table Entry	Upon detection of these digits start the Action>>>>	Start this program number upon an exact match in the entry column
P	00	09
P	???	01

When adding to the table, click the **SAVE** button to store the information



## Creating a Program

### Opening the Program Editor:

Select the Program Editor button from the menu.  
A Password box will pop up in which you must enter the Password

### Defining a Program:

All the programs are saved in the database under one name and can be viewed and/or modified within the editor.

To add a name in the Program Table click the + sign and enter a name  
Click the √ sign to save the Program Table name

### Creating a Program:

Every program is built out of Action Codes, which are put in logical sequence

Three main rules to remember when creating a Program

1. The **Drop** program is always program 21
2. The **Ring** program is always program 22
3. AXS has 20 parallel programs  
Lite has 10 parallel programs  
M-AXS has 50 parallel programs

**Uploading to a dialer****Opening the Uploader:**

Click the Upload button in the main window

**Configuring the Uploader:**

Selecting the Com port settings;

From the menu, select **Port** and **Configure**

A dialogue box will appear where you can select the proper Com port and baud rate.

The baud rate for an AXS and Lite should be 2400 and for the M-AXS 9600.

Click **'OK'**

**Uploading:**

In the Upload options select the desired items to be Uploaded.

To select all the items, click the right mouse button and select **Check All**

Connect the RJ45 cable to the dialer and the DB9 connector

Connect the DB9 connector to the selected Com port

Click the **'CONNECT'** icon from the menu

The bottom window will turn white and a sign on message from the dialer should be seen in the top window

Click the **Upload** button

If the **Debug** box was checked in the Diagnostic Procedures box, the information being sent to the dialer will be displayed in the bottom window. This will allow the "debugging" of the program should a problem arise while the upload is taking place

After the uploading is finished click the **'DISCONNECT'** icon from the menu

Please refer to the **Zoo Keeper User Manual** for a more detailed description of each item contained in this Quick Guide.